



GAT MONTHLY MEMBERSHIP PROGRESS REPORT

Results as of: 3/31/2023

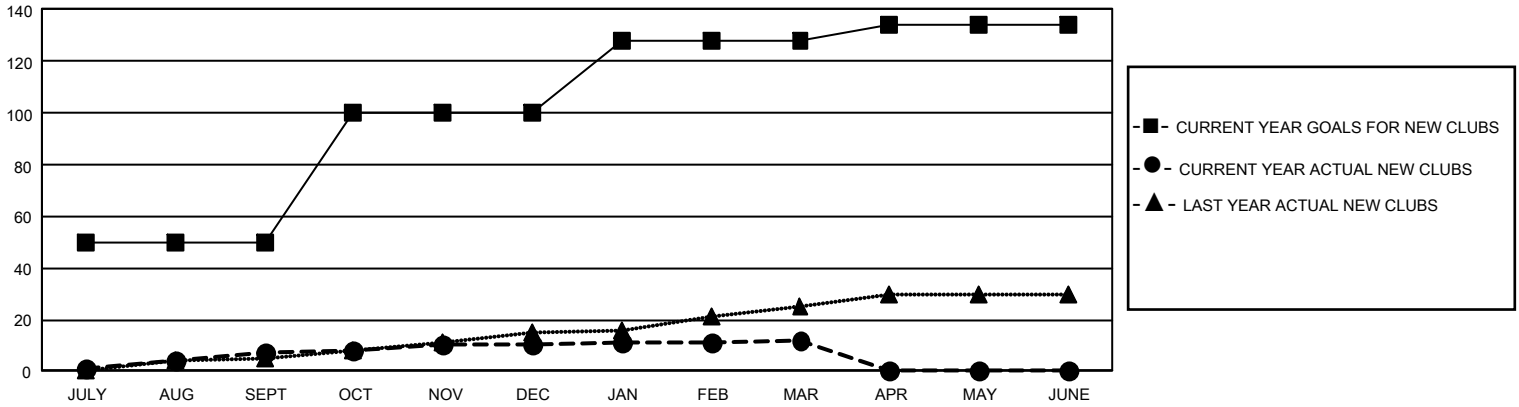
GMT Constitutional Area 5 - K, Group K

REPORT DOES NOT INCLUDE CLUBS IN UNDISTRICTED AREAS.

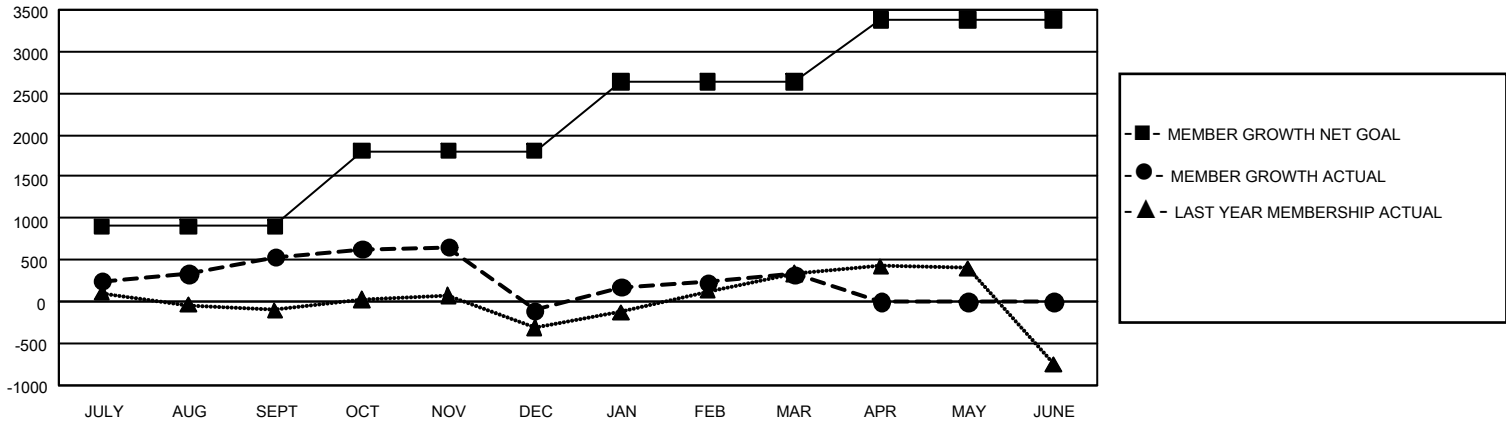
Clubs			
RESULTS FOR 2022-2023			
QUARTER	NEW CLUB GOAL	NEW CLUBS	DROPPED CLUBS
JULY/AUG/SEPT	150	7	6
OCT/NOV/DEC	150	3	13
JAN/FEB/MAR	84	2	5
APR/MAY/JUNE	18	0	0

Members			
RESULTS FOR 2022-2023			
QUARTER	MEMBER GROWTH NET GOAL	MEMBER GROWTH ACTUAL	DROPPED MEMBERS ACTUAL (including transfers)
JULY/AUG/SEPT	900	1,499	919
OCT/NOV/DEC	910	800	1,406
JAN/FEB/MAR	825	1,030	566
APR/MAY/JUNE	750	0	0

GOALS AND ACTUAL NEW CLUBS CUMULATIVE



GOALS AND ACTUAL MEMBERS CUMULATIVE



DROPPED CLUBS: 24	576 CLUBS OF 830 ADDED 1 OR MORE NEW MEMBERS	GENDER DISTRIBUTION	
		MALE 18,126 (69.66%) FEMALE 7,893 (30.34%) NON BINARY 0 (0.00%) PREFER NOT TO ANSWER 0 (0.00%)	
DROPPED MEMBERS		CLICK HERE FOR CUMULATIVE MEMBERSHIP DATA	TOTAL FAMILY UNIT MEMBERS 2,998
DECEASED 62 CLUB CANCELLED 302 OTHER 2,527 TOTAL 2,891	FAMILY MEMBERS PAYING HALF DUES 1,747		